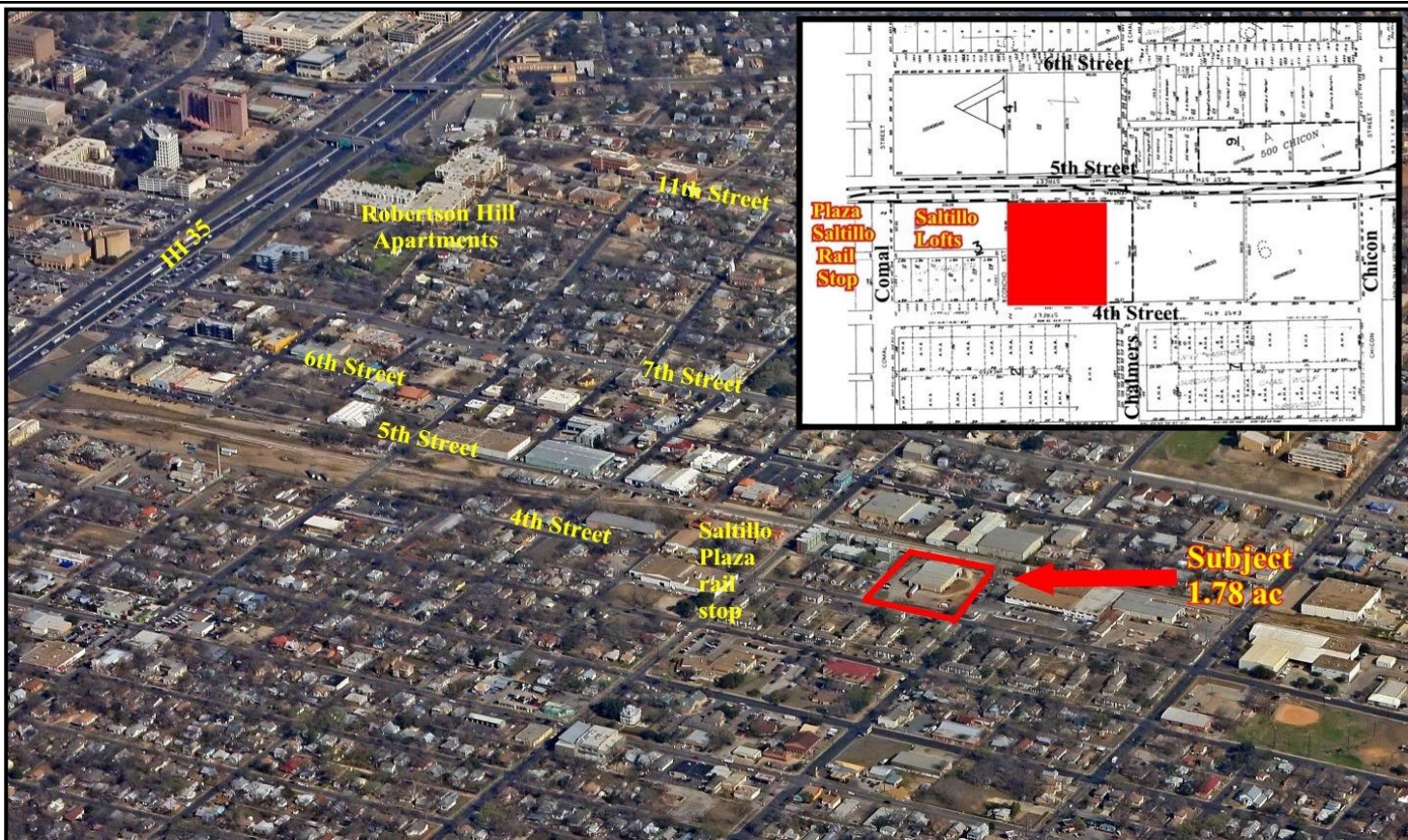


Salttillo Station Mixed use site: 1.78 ac 4th Street near Plaza Salttillo rail stop Austin, TX



Location: Bounded by both 4th and 5th Streets ¼ block east of Plaza Salttillo and adjacent to Salttillo Lofts.

Size: 1.78 ac.

Entitlements: Zoned TOD Mixed-Use .

Price: \$50/sf.

Site advantages:

- Views of downtown
- Near downtown rent rates (\$1.50/sf+)
- Walking distance to rail stop

 Taylor Commercial
Real Estate

Kent Taylor, CCIM
(512) 708-0800

900 Congress Ave, Suite L165
Austin, TX 78701

ktaylor@taylor-commercial.com
www.taylor-commercial.com

All information regarding this property is from sources deemed reliable; however, no independent investigation has been made of this information and no warranty or representation is made as to the accuracy thereof. No warranties or representations are made as to any condition that may affect the value or suitability of the property.